

50/140

140

WIMBLEDON VILLAS OF VIA VERDE - P. U. D.

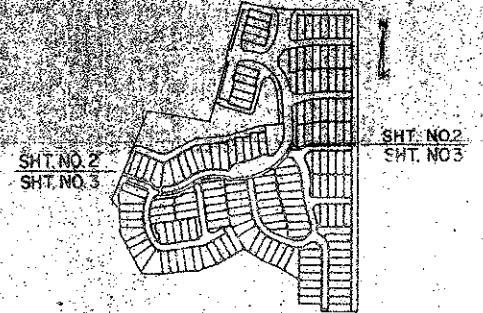
BEING A REPLAT OF PART OF PARCELS "A", "B", "D" AND FOX HOLLOW DRIVE OF TOWN PLACE, PHASE I OF VIA VERDE - P.U.D., RECORDED IN PLAT BOOK 42, PAGES 75, 76 AND 77, PUBLIC RECORDS OF PALM BEACH COUNTY, FLORIDA

IN PART OF SECTION 23, TOWNSHIP 47 SOUTH, RANGE 42 EAST

PALM BEACH COUNTY FLORIDA
IN 3 SHEETS SHEET NO 3

SEE & JENSON
ENGINEERS - ARCHITECTS - PLANNERS, INC.
WEST PALM BEACH, FLORIDA
JUNE 1984

SCALE IN FEET SCALE 1"=40'



INDEX MAP



STATE OF FLORIDA
COUNTY OF PALM BEACH
This plat was filed for record at _____ this _____ day of _____ 1984, and duly recorded in Plat Book No. _____ on Page _____
JOHN B. DUNKLE
Clerk Circuit Court
By: _____ D.C.

CURVE DATA

NO. 1	R=24.24'
	L=127.16'
	T=25.00'
NO. 2	R=24.24'
	L=117.07'
	T=20.86'
NO. 3	R=24.24'
	L=117.07'
	T=20.86'

PLAT LIMITS
TOTAL = 1351.00'
LAKE WORTH DRAINAGE DISTRICT E-S CANAL

0323-020

39

WIMBLEDON VILLAS

PLAT LIMITS